

The

Richmond

Trophy



MONDAY
5th November
1962

Souvenir

Programme

THE RICHMOND TROPHY

Precious Winners

JEANETTE ALTWEGG, C.B.E.

Gt. Britain
1949-50



YVONNE SUGDEN

Gt. Britain
1952-53-55



BARBARA WYATT

Gt. Britain
1951



NICOLE HASSLER

France
1960-61



PATRICIA PAULEY

Gt. Britain
1954



JOAN HAANAPPEL

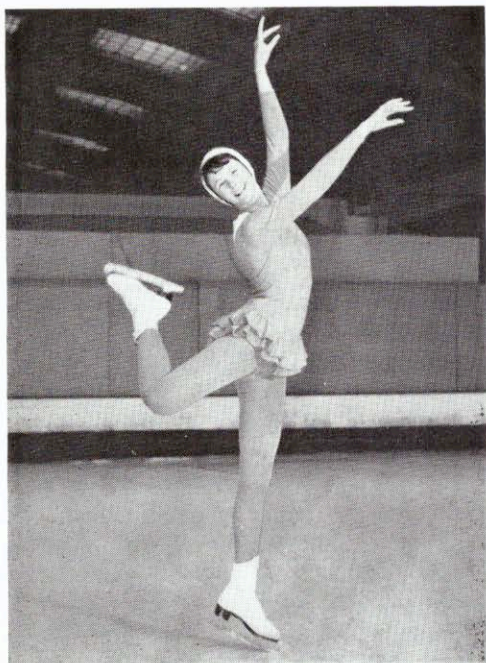
Holland
1959



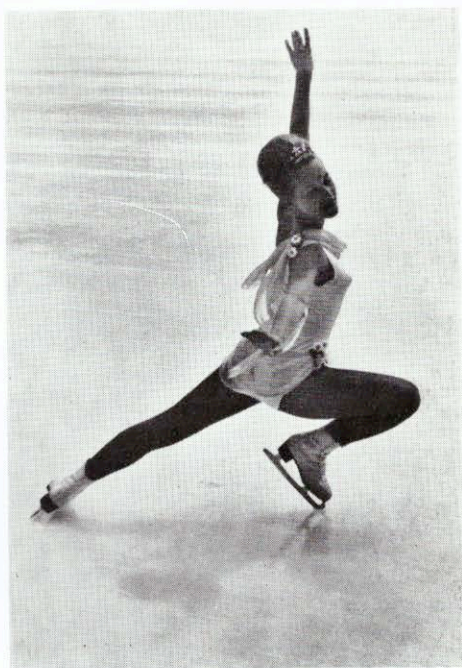
SJOUKJE DIJKSTRA

Holland
1956-57-58





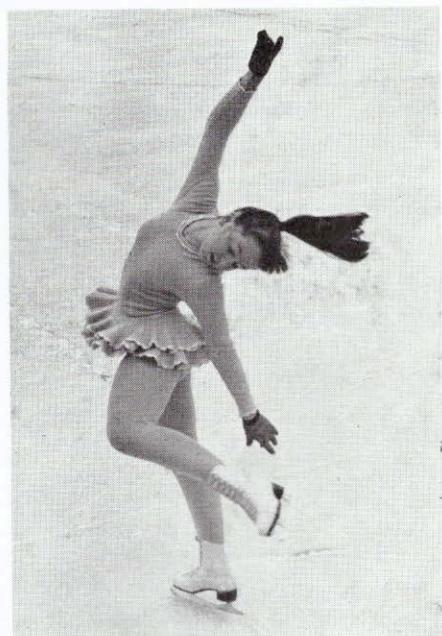
PATRICIA DODD
England



ANN-MARGRETH FREI
Sweden



MARGUERITE VERBOVEN
Belgium



MONIKA WICKEL
W. Germany

THE RICHMOND AMATEUR ICE SKATING CLUB

An affiliated Club of the National Skating Association of Great Britain

have pleasure in presenting to you this evening the
International Skating Competition
(LADIES)

for the

RICHMOND TROPHY

— FOURTEENTH YEAR —

Holder : Miss Nicole Hassler

and the

TOMLINSON TROPHY

Open Ice Dance Competition

Holders : Miss J. Watson and Mr. D. Simmons

ORGANISING COMMITTEE:

Trophy Secretary: Mrs. M. W. Groombridge

N.S.A. Representative: Mr. A. D. C. Gordon

Mr. B. Jones; Mr. J. Franklyn; Mr. E. R. P. Crawford; Miss P. Whitbread;

Mr. and Mrs. P. Burrows.

SPORTS-DROME LTD.

Directors: J. B. DUNCAN, C.A. (Chairman and Joint Managing)

C. LANGDON (Joint Managing)

A. V. HOPKINS (General Manager)

R. W. RULE

A. GERSCHWILER (*Swiss*)

Manager: R. E. ALPE

INSTRUCTIONAL STAFF

ARNOLD GERSCHWILER (Senior Instructor)

JOYCE BOSLEY

ROY CALLAWAY

BETTY CALLAWAY

WENDY MILLS

MICHAEL BIRTWISTLE

ROY LEE

COLIN KEARNEY

LALLAH VAN DER GOOT

SALLIE THOMPSON

PAT CURLE

ANNE PALMER

PAM GRIFFITHS

CELIA BROWN

SUSAN FINCHAM

LICENSED BARS — each floor — ENTRANCE END

Kindly keep clear of all Exits and Gangways



CAROL NOIR
U.S.A.



SYLVAINE DUBAN
France



ANNE LENTON
England



Photo by Universal Pictorial Press
GUNILLA VICTOR
Sweden

The Richmond Trophy

This magnificent trophy was presented for annual competition during the last year of the second World War with the object of holding a competition to give some incentive to those young ladies who were deprived of entering Championships and International Competitions and whose interest and possibly careers might be jeopardised as the result of war-time conditions.

Owing to the sudden cessation of hostilities before the necessary arrangements could be made for holding such an event, further thought was given to the conditions of entry and it was decided to extend the entry to competitors from all countries with certain limitations as to achievement qualifications.

It was felt that Ice Skating was a world wide sport and such events might be a means of creating a better feeling and understanding among the various nations.

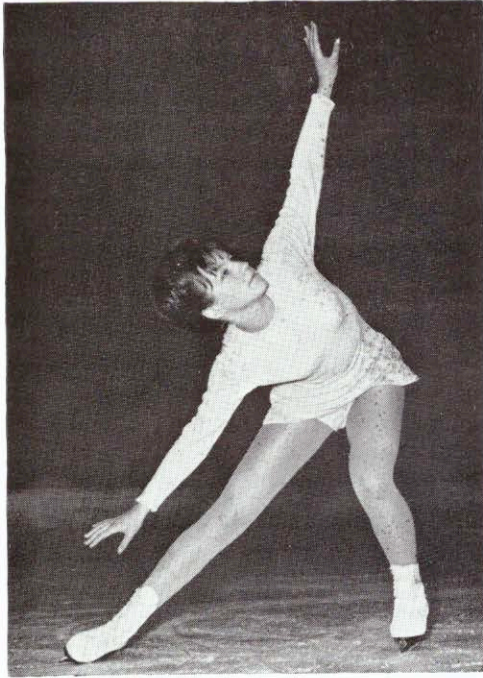
How far this has in any way achieved any result in this respect one cannot tell, but we do know that over the years, since its inception, competitors have entered from a large number of countries, including Canada, Australia, and most European countries, including East Germany and Poland and the friendship existing between them is astounding, which is evidenced not only on the ice but when relaxing over refreshments.

With such an atmosphere among sportswomen one wonders, sometimes, why wars are necessary or caused; maybe in time sport may play a much greater part in maintaining world peace and if skating can or has made any contribution, we at 'Richmond' would feel that in some small way we may have helped by the furthering of friendly international relations and that any effort has been well worth while.

PLACES OF INTEREST

ON SUCH AN OCCASION as this we know there are many whose first visit it is, whether English or Continental, and whilst time may not permit on this occasion, a few notes may be of interest should a return to the district provide those extra hours. Many of these programmes will find their way to Continental countries and those contemplating a skating trip—and there are many—would no doubt appreciate what is within a reasonable distance if not in the immediate vicinity.

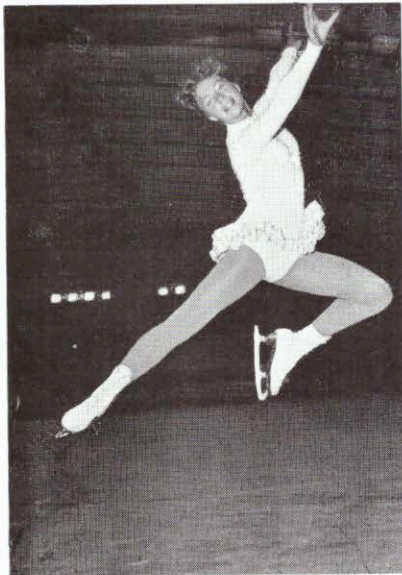
London itself is only nine miles to the centre and details of what that has to offer needs a Baedeker. **Kew Gardens, Hampton Court, Richmond Park, Richmond Horse Show, Henley (rowing), Windsor Castle and Park** are places of appeal, not only to the continental, but the English public—and these all within easy reach of Richmond.



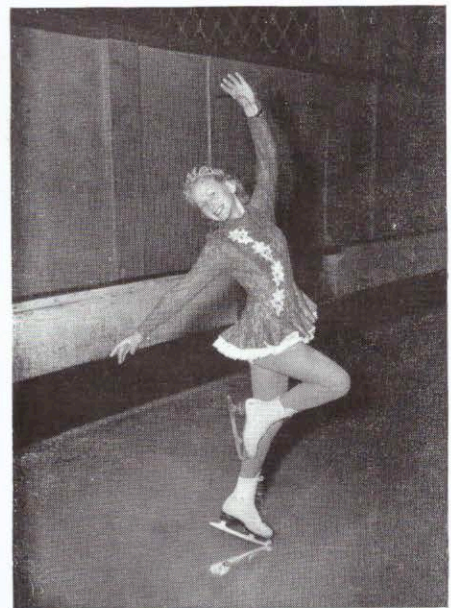
PETALYN WILLIAMS
England



CHRISTINE VAN DE PUTTE
Belgium



CAROL ANN WARNER
England



ANNE-KARIN DEHLE
Norway

THE RICHMOND TROPHY

Abstract of Rules

The competitors must be amateurs who have never won the World or European Championship or Olympic Competition, who are members of an Association or Special Club, member of the I.S.U.

The prizes consist of "The Richmond Trophy" (which will be held by the winner for one year, but remains in the custody of the Organising Club), a souvenir replica being awarded to the winner for possession, prizes of honour to the second and third.

The competition shall consist of two sections:—

- (a) Compulsory figures not to exceed five in number.
- (b) Free skating—four minutes duration.

The Compulsory Figures

skated during the day, have each a factor value, as laid down by the International Skating Union; this year's being—

No. 35	Maximum number of points from each Judge:		
No. 20			
No. 36	Compulsory Figures ...	156	
No. 31	Free Skating	103.2	
No. 41	*Factor 8.6		
	Total	259.2	

To be skated only on one foot, as drawn.

Marks for each figure range from 0 to 6. Intermediate values to one decimal place may be given (Red displayed figure).

*The factor is calculated so that the total marks for Free Skating come as near to, but do not exceed, two-thirds of the possible marks awarded for figures.

This is the first occasion that the revised factor values for 'Figures' have operated for this competition.

RICHMOND COMPE

- 1. SANDRA BRUGNERA ³
- 2. ANNE-KARIN DEHLE ²
- 3. PATRICIA DODD ⁶
- 4. SYLVAIN DUBAN ⁵
- 5. ANN-MARGRETH FREI ¹⁴
- 6. DANIELE GIRAUD ⁴
- 7. NICOLE HASSLER ¹⁵
- 8. MICHELINE JOUBERT ¹⁸
- 9. USCHI KESZLER ⁹
- 10. ANNE LENTON ¹⁶
- 11. JANICE LOWE ¹⁹
- 12. CAROL NOIR

Figures	Free Skating	Total
Italy		
Norway		
England		
France		
Sweden		
France		
France		
France		
W. Germany		
England		
Scotland		
U.S.A.		

The numbers worn by competitors coincide with pro

1962 — FINAL PLACINGS 1st.

OFFI

Referee:

Dr. Paul Baron (France)

Assistant Referee:

Mr. A. D. C. Gordon (England)

Judges: (to be selected from)

- ¹ Mrs. S. Bianchetti-Garbato (Italy)
- ² Mrs. M. Georgelin (France)
- Mrs. D. McLean (England)
- Mrs. P. E. L. Davis (England)
- ⁵ Mrs. H. R. Sullivan (U.S.A.)
- Mrs. P. Peat (England)
- Miss M. Phillips J.P. (England)
- ³ Mr. W. Kahle (W. Germany)
- Miss P. Borrajo (England)

Secretaries for Public Marking:

Miss P. Whitbread, Miss T. Hoskins, Miss M. Dalzell, Mrs. Toms

Music Steward:

Mrs. M. W. Groombridge

TOMLINSON

Donated by W. R. TOMLINSON, Esq.

Judges (to be selected from)

- Miss P. Borrajo
- Mr. C. D. L. Jones
- Mrs. D. Ward
- Mrs. P. E. L. Davis
- Mr. L. C. Seagrave
- Miss M. Phillips, J.P.

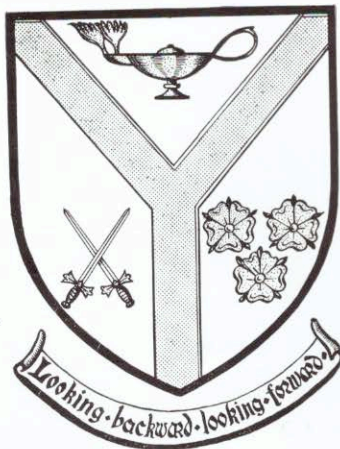
COMPI

Roger Kennerson and Y
Peter Bewley and Hea
I. E. Phillips and Mi
Anthony Barron and An

Presentation of Trophies

Orchestra under the direction of ARTHUR SYLVESTER

Looking
Backward



Looking
Forward

Each year we realise some 12 months of skating and achievement have passed and it is interesting to look back and realise that certain people have achieved greater honours, and it is most pleasing to us to find that those who have been closely associated with us have achieved some success either in Amateur or Professional circles. Since last November two World titles have come our way, one Amateur and one Professional.

At Prague Miss Sjoukje Dijkstra (Holland) had the honour to become **WORLD CHAMPION (Ladies')**, a result which gave immense satisfaction to ALL at 'RICHMOND' as she has literally become 'one of us', having been semi-resident in the district for many years although still domiciled in Holland, although her visits to her parents are somewhat spasmodic. Thoroughly unspoilt, natural in all her actions,



speaks beautiful English and conducts herself with the modesty a champion and true sportswoman should. On one of her practise sessions she had the pleasure of meeting and skating before The Princess Anne. We sincerely wish her even further successes.

Perseverance brought *ultimate* reward to two members of our Instructional Staff in the Professional Worlds Ice Dance Championship held at Nottingham last May. After being Runners-up for two years that popular partnership, Roy Lee and Anne Palmer skated brilliantly in front of a huge crowd, including a large contingent of 'Richmond' skaters to achieve the winners' Trophy—a most popular award by general acclamation also. No doubt much more will be heard of this popular pair or perhaps some of their promising pupils.



The League of Nations

Internationally the headquarters of this organisation are situated in Geneva, but at times one would feel that a branch of same was situated in this part of England for the numerous languages one encounters in the course of a day is really astounding, the real reason is undoubtedly another Swiss product — *Arnold Gerschwiler*, who over the years has produced so many Champions — World, European and National, in addition to Olympic honours.

Whilst we are proud of his association with us we are likewise honoured to have so many charming young ladies visiting us for long periods from overseas, most of whom return each year until such times as they have achieved at least one of their ambitions. During the past few months some 50 skaters from such countries as U.S.A., Canada, Sweden, Norway, Finland, Germany, Australia, Holland and France have visited this rink and we hope returned to their native land better skaters, better linguists and happy with the welcome extended to them; we hope so — and we think so, one young lady has been coming for something like 10 years and has achieved almost every honour open to skaters, and so it goes on.

THROUGH THE AGES

Whilst skating is far from being impersonal it has some semblance to a 'production line'. As many of our patrons realise 'Childrens Classes' have now been operating here for some 10 years during which period we have seen tiny tots and others progress and naturally grow older, in the one case some have become Championship Competitors and even Champions; whilst on the other hand some whose aspirations have not been so great, but have nevertheless derived both health, pleasure and happiness from the sport and the associations made, are now still skating and even accompanying their own children on the ice.

The success of these classes has been achieved as the result of careful thought and perseverance, and feel much credit is due both to Arnold Gerschwiler and the whole of our Instructional staff, all of whom apply themselves well to a job which is not without its difficulties, as any profession of teaching involves.

We are happy to have such a loyal and persevering staff who take such a keen interest in their pupils both young and 'elderly' — no, not 'old' — one never becomes old skating, the atmosphere is too congenial, and the physical and mental benefits surprisingly advantageous.

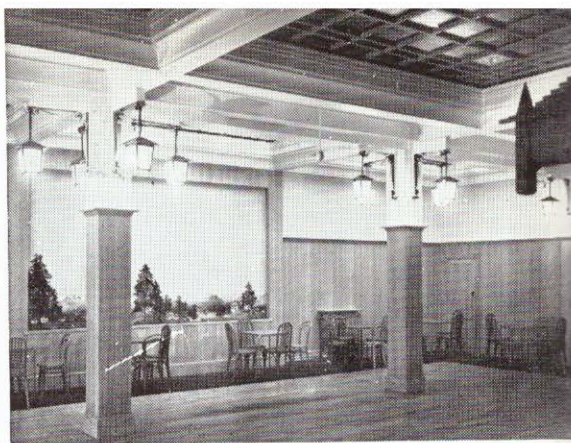


**ARNOLD
GERSCHWILER**

“L’AIMANT,” that magnetic expression, typically French, but so applicable to the Sports-Drome, so often referred to, due to its situation, as the Richmond Ice Rink.

Those who know it, never fail to return, servicemen, visitors from abroad and various parts of Great Britain, make it the first “Port of Call” when returning to the district after a long absence.

Two features contributing to its popularity are the general atmosphere AND its “AROSA” amenities which have been the scene of so many Club and Private parties.



“AROSA”

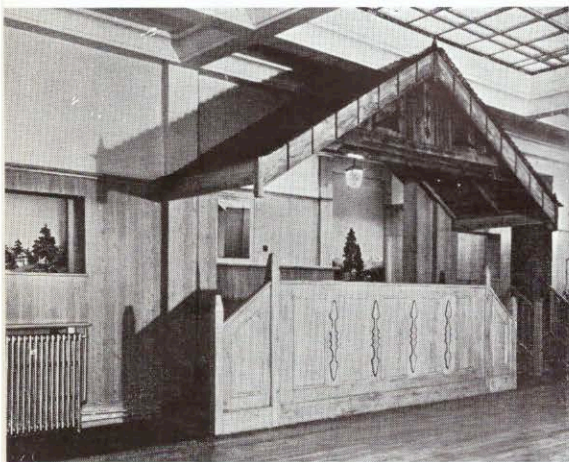
THE AROSA ROOMS

EVERYONE at some time or another enjoys a Party, although the venue often presents a problem; to find a hall—large enough to be accommodating, small enough to be friendly.

We feel, in these rooms, we have just the thing for most occasions—Party, Dance or Social. Perhaps a Birthday is in the offing, maybe an Engagement or even a Silver Wedding Anniversary, or possibly some of the “teenagers” want an excuse for “throwing a party.” This room we are sure will certainly act as an incentive. “A Party at home certainly makes a lot of work.” For the sake of a few pounds, is it really worth “turning the place upside down?”

Complete with cloakrooms, licensed bar, running buffet (if required), these rooms have recently been redecorated and lighted with a Swiss setting.

We welcome enquiries from Clubs, parties or individuals, and will be pleased to quote you terms according to the particular requirements and give you an opportunity to inspect the premises.



Chalet Bar — Arosa Rooms

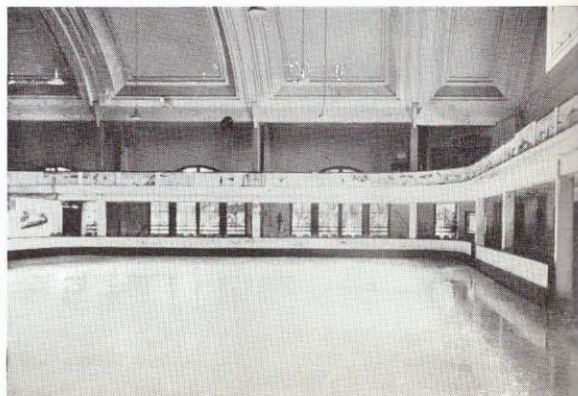
AMENITIES

THIS UNIQUE RINK was constructed to give to the skating enthusiast facilities unobtainable elsewhere, whether he be beginner or expert.

Should you be a party or Club organiser the entire rink is available for hire at most advantageous terms.

THIS ICE SURFACE IS SEPARATE
FROM OUR MAIN RINK

The Arosa Rink



Championships of Gt. Britain

in

Ice Skating

MEN · LADIES · PAIRS

also

ICE DANCING COMPETITION

WILL BE HELD *AT THIS RINK*
THURSDAY 6th DECEMBER 1962

7.45 p.m.

Compulsory Figures will commence 9 a.m.

BOOK EARLY



SAVE THE 'Q'



Children's classes in progress

The New Look

This modern phrase one possibly associates with dress or perhaps the home, but not so often to places of recreation. Since the previous "Trophy" was held a few changes have been made; certain large windows had to be replaced, so it was felt that something symbolic of our business should be featured, so we present to you and skating generally a permanent tribute to three great skaters; at the entrance end Aja Vrzanova (now Zanova) World Champion 1949 and 1950, trained at this rink by Arnold Gerschwiler.

The window facing your entry depicts that wonderful pair also World Champions whom we had the pleasure of skating here in May last — Otto and Maria Jelinek.

These beautiful coloured windows produced from actual photographs should act as some incentive to the younger generation to endeavour to emulate their achievements.

At the time of going to 'press' a somewhat major structural change has been enforced upon us and whilst architecturally you, or at least our regular patrons, may have observed the growth of a rather impressive improvement at the entrance end, strangely enough that which is so obvious was not the real reason for the changes, but nevertheless we trust you'll avail yourself of an inspection, if not tonight, in the near future — We feel it only right to offer an explanation, specially to our active skating public for their tolerance during the past few weeks and explain that any temporary inconvenience has been for their ultimate comfort.

As a result of an increase in a new clientele, much greater space was required to service our "hire" departments and changing rooms efficiently it was necessary to create space. Being an island site bounded on three sides by corporation property and a service road it was impossible to extend *NSE* or *W*, the seed was *SEWN* and it became *NEWS* that the builders were in; having made play with these four letters we feel we might be excused if we used just one more variation by explaining that **WE Never Shut**, at least that is our policy.

We trust that the thought and effort, not to mention expense, will have the approbation of our ever loyal and expanding public and that they may avail themselves of a tour of inspection when we are less busy.



USCHI KESZLER
W. Germany

Forthcoming Events

Curling International

The International Curling Match between Scotland and England is played alternately in Ice Rinks in the respective countries — and hitherto the Manchester Ice Palace has been the venue when England has been the host — but since the formation of the 'Province of London' of the Royal Caledonian Curling Club it is now Richmond's turn to stage, for the first time in the South, this important representative event in the Curling calendar. In spite of limited ice time on Tuesdays only at Richmond in comparison with plenty of curling time at the Scottish rinks — curling is proving a very popular sport at Richmond. The six clubs in the 'Province' are composed mainly of Scottish farmers, bankers and business men, but Sassenachs are well represented through their curling associations when indulging in winter sports in Switzerland.

The first English Province from Manchester is represented in four rinks with their London Colleagues three rinks to combat the Scottish invasion of well seasoned curlers in this match, and competition should be very keen on *Tuesday the 4th December* for the beautiful 'Ballantyne Trophy' presented by Sir Henry Ballantyne in 1932.

Membership of the London Clubs is extremely limited — but any keen curlers who are interested in joining should contact the Hon. Secretary of the 'Province' at the Richmond Ice Rink either by letter or 'phone. Why not ask at the office for a brochure.

Play in the International will be from 10 a.m. to 7 p.m.

CURLERS IN ACTION

AT

RICHMOND ICE RINK



SPORTS - DROME

RICHMOND ICE RINK

RICHMOND BRIDGE TWICKENHAM

'Phones

POPesgrove 3646

GREAT BRITAIN'S PREMIER AND MOST POPULAR RINK

is

open for public skating daily throughout the year (Good Friday and Christmas Day excepted)

★ ★ ★

THE RINK THAT CATERS FOR SKATERS

Three sessions every day

BOOTS AND SKATES FOR HIRE

★ ★ ★

THE AROSA RINK—referred to elsewhere—is open to the public:

Wednesday, Saturday and Sunday—**AFTERNOONS**

Monday, Thursday and Sunday—**EVENINGS**

at a Supplementary Fee

MONDAY, WEDNESDAY AND THURSDAY EVENINGS

FIGURE SKATES ONLY

45 Minutes **ICE DANCING** to

ARTHUR SYLVESTER'S STRICT TEMPO ORCHESTRA

★ ★ ★

TUESDAY NIGHT

CURLING 6.0 to 8.30 p.m.

Headquarters: **Province of London of the R.C.C.C.**

Arosa Rink: 8.0 to 10.0 p.m. SKATING Large Rink: 8.30 to 10.0 p.m.

Skating **2/6**

Skate Hire **6d.**

YOU'LL FEEL 'AT HOME' at the SPORTS-DROME